

Q1) Fruits are formed from the

- a) Stamen
- b) Stigma
- c) Ovary
- d) Ovule

Correct Answer: Option (c)

Q2) Reproduction is essential for living organisms in order to

- a) Keep the individual organism alive
- b) Fulfill their energy requirement
- c) Maintain growth
- d) Continue the species generation after generation

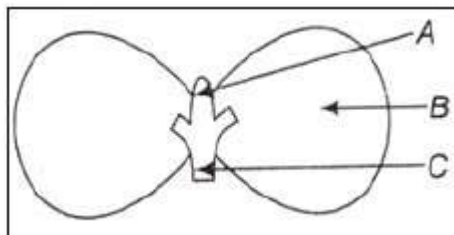
Correct Answer: Option (d)

Q3) The male reproductive parts of a flower, the stamens, are collectively known as

- a) Androecium
- b) Filament
- c) Anther
- d) Gynoecium

Correct Answer: Option (a)

Q4) In the below figure, parts A, B and C are, sequentially,



- a) Cotyledon, plumule and radicle
- b) Plumule, radicle and cotyledon
- c) Plumule, cotyledon and radicle
- d) Radicle, cotyledon and plumule

Correct Answer: Option (c)

Q5) Which of the following diseases is transmitted sexually?

- a) Kala Azar

- b) Jaundice
- c) Cholera
- d) Syphilis

Correct Answer: Option (d)

Q6) IUCD is for

- a) Vegetative propagation
- b) Contraception
- c) Increasing fertility
- d) Avoiding miscarriage

Correct Answer: Option (b)

Q7) Which among the following is not the function of the testes at puberty?

- (i) Formation of germ cells
 - (ii) Secretion of testosterone
 - (iii) Development of placenta
 - (iv) Secretion of estrogen
- a) (i) and(ii)
 - b) (ii) and(iii)
 - c) (iii) and(iv)
 - d) (i) and(iv)

Correct Answer: Option (c)

Q8) Which of the following is a contraceptive?

- a) Copper T
- b) Condom
- c) Diaphragm
- d) All of these

Correct Answer: Option (d)

Q9) The correct sequence of organs in the male reproductive system for the transport of sperm is

- a) Testis → vas deferens → urethra
- b) Testis → ureter → urethra
- c) Testis → urethra → ureter

d) Testis → vas deferens → ureter

Correct Answer: Option (a)

Q10) During adolescence, several changes occur in the human body. Mark one change from the following associated with sexual maturation in boys

- a) Increase in height
- b) Cracking of voice
- c) Weight gain
- d) Loss of milk teeth

Correct Answer: Option (b)

Q11) AIDS is a deadly disease which is caused by

- a) a protozoan
- b) a fungus
- c) a bacterium
- d) a virus

Correct Answer: Option (d)

Q12) Which among the following diseases is not sexually transmitted?

- a) Syphilis
- b) Hepatitis
- c) HIV-AIDS
- d) Gonorrhea

Correct Answer: Option (b)

Q13) A population of thermophilic archaebacteria are generally found in hot springs. Any change to the temperature of the water affects the survival of the archaebacteria. If the temperature of hot springs gets reduced, change in which component can allow the survival of a few members of these archaebacteria?

- a) Cell wall
- b) Cytoplasm
- c) DNA
- d) Ribosomes

Correct Answer: Option (a)

Q14) The process in which small portions of the oviducts of a woman are removed by surgical operation, and the cut ends are ligated is

- a) copper T

- b) tubectomy
- c) vasectomy
- d) diaphragm

Correct Answer: Option (b)

Q15) What conclusion can be made about the division in plasmodium?

- a) The cyst repeatedly divides to form many daughter cells.
- b) The cell divides multiple times giving rise to many daughter cells.
- c) The nucleus repeatedly divides inside the cell to form new daughter cells.
- d) The cyst enlarges in size and then bursts, producing many new daughter cells.

Correct Answer: Option (b)

Q16) The ratio of the number of chromosomes in a human zygote and a human sperm is

- a) 2:1
- b) 3:1
- c) 1:2
- d) 1:3

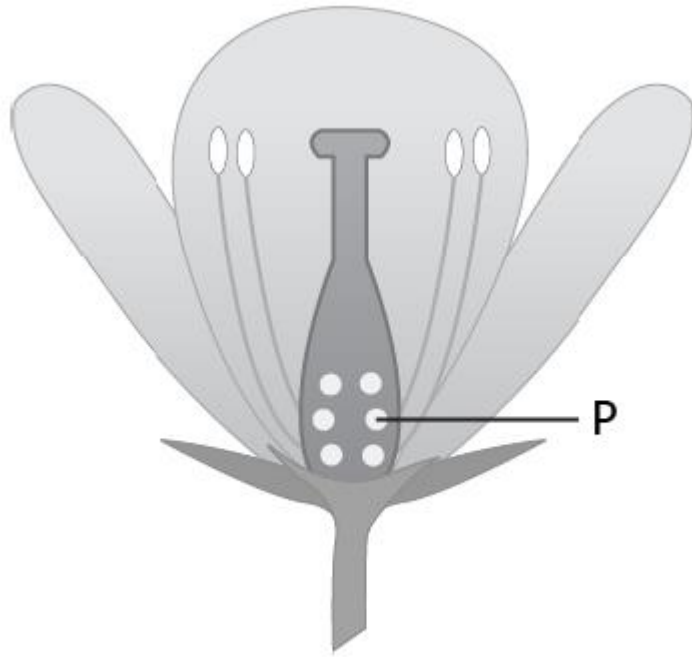
Correct Answer: Option (a)

Q17) How do spores develop into Rhizopus?

- a) Spores divide and grow into a new individual
- b) Spores combine with other spores and grow
- c) Spores enlarge in size for the growth of new individual
- d) Spores land on other organisms and increase with their growth in size

Correct Answer: Option (a)

Q18) The image shows the structure of a flower.



Which of the following processes will likely be disturbed or not occur if the labelled part is removed from the flower?

- a) Formation of fruit
- b) Transport of pollen
- c) Formation of pollen
- d) Development of the pollen tube

Correct Answer: Option (a)

Q19) Which event will likely occur in the ovaries of females after attaining puberty?

- a) Fertilisation
- b) Synthesis of eggs
- c) Production of eggs
- d) Growth and development of the embryo

Correct Answer: Option (c)

Q20) Which of the following options correctly shows the path that the sperms take when they are released from the male reproductive system?

- (a) testis → ureter → urethra → penis
- (b) testis → vas deferens → ureter → penis
- (c) testis → ureter → vas deferens → penis
- (d) testis → vas deferens → urethra → penis

Correct Answer: Option (d)